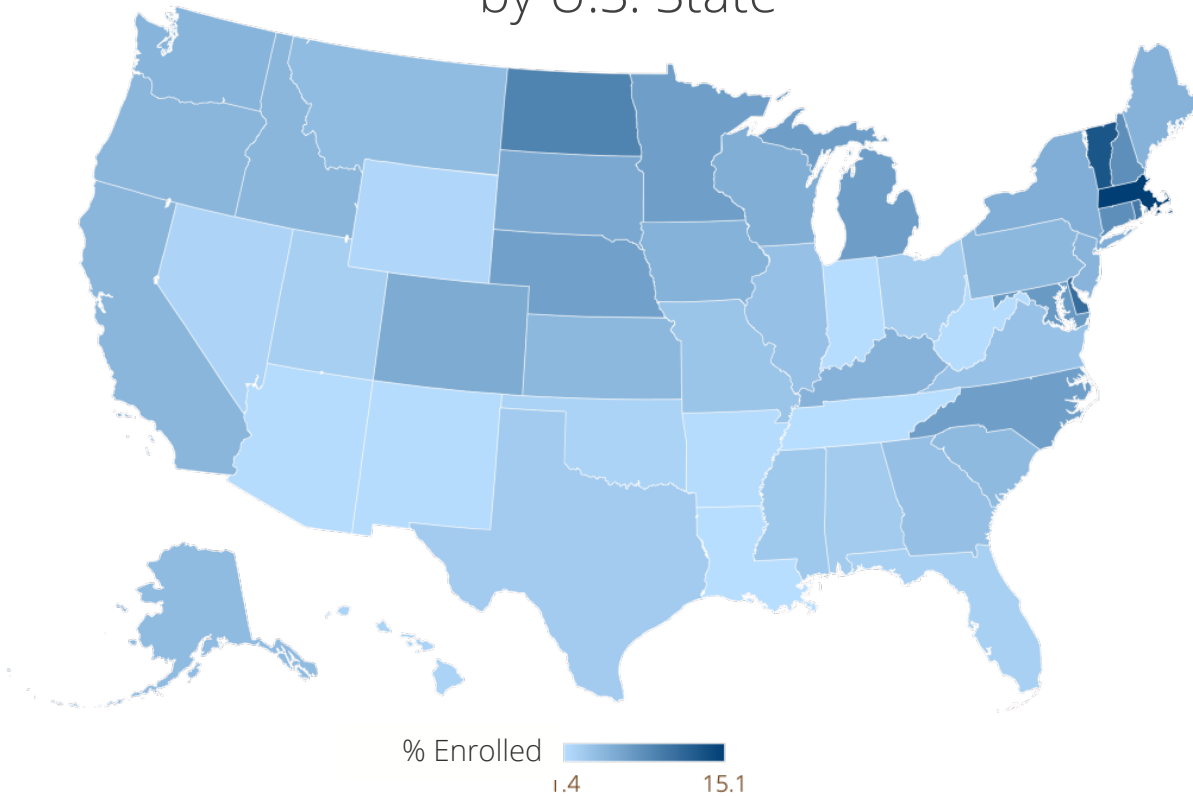


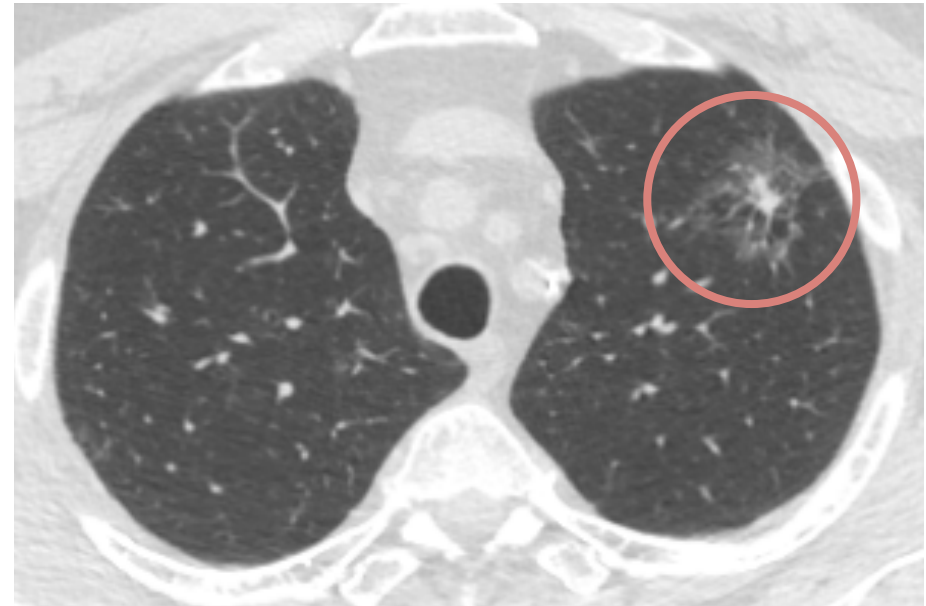
# Our Research in Lung Cancer Screening



% of Lung Cancer Screen (LCS) Eligible Medicare Beneficiaries Receiving LCS by U.S. State



Source: 100% FFS Medicare FFS claims file (year 2016)



% of LCS Eligible Receiving LCS

U.S. Region	Mean +/- SD
Northeast	8.3 +/- 3.9
Midwest	5.2 +/- 12.1
South	3.9 +/- 2.5
West	3.5 +/- 1.5